

## Abacus Capital and Big Cypress Capital Announce The Avenues at Atherton in Charlotte's Dynamic South End

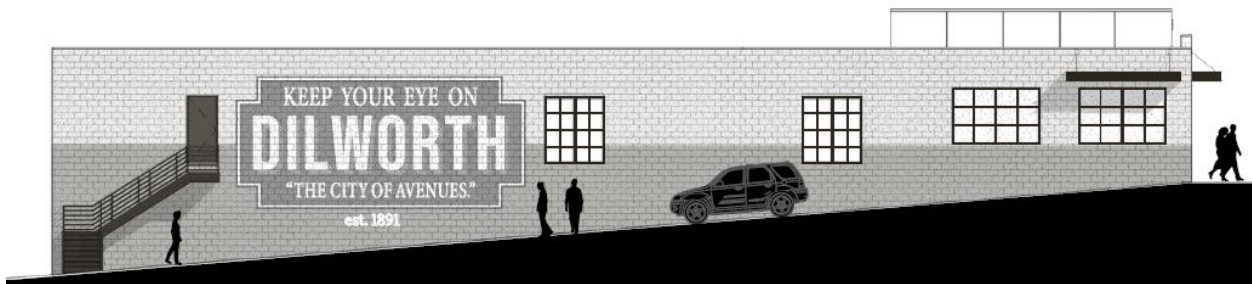


Abacus Capital (“Abacus”) and Big Cypress Capital (“Big Cypress”) are pleased to announce The Avenues at Atherton, a redevelopment and rebranding of a neighborhood street retail center located in Charlotte’s dynamic South End formerly known as The Pavilion at South End.

### Repositioned Project, Refreshed Branding

The Avenues at Atherton is ideally situated at the entrance to the Dilworth neighborhood – originally known as “The City of Avenues” due to its grid-like street layout – and directly across from Atherton Mill and The Design District – the commercial epicenter of Historic South End’s live-work-play lifestyle.

As part of the rebranding efforts a large mural will be incorporated on one elevation of the project to evoke memories of and pay homage to the area’s past.



“We are pleased to be able to utilize such a highly visible adaptive reuse project as The Avenues at Atherton as an opportunity to celebrate a golden period of the City’s history,” says Wes McAdams, a partner with Abacus Capital. “We take great pride in the assets and communities in which we invest and as a matter of principle endeavor to leave them better off – economically and aesthetically – than when we originally engage with them.”

Abacus Capital and Big Cypress Capital originally acquired the 31,000 square foot unanchored strip shopping center located at 2041 South Boulevard in December 2018 and broke ground on its multi-million dollar redevelopment efforts in January 2019. As part of its scope of improvements the partnership added substantial parking to the site and lowered the slab in a portion of the space to create dramatic 12' ceilings and a special plaza-type look and feel for its neighborhood-facing F&B and retailing spaces.

#### **ABOUT ABACUS CAPITAL**

Abacus Capital is a multi-strategy product type agnostic tactical real estate investor focused on the acquisition and development of differentiated commercial real estate in growth markets across the southeastern United States. Our mission is to identify real estate opportunities that we believe offer our investors the most compelling risk-adjusted returns in dynamic capital markets environments. The principals of Abacus Capital have over nearly 25 years of real estate investing experience and have acquired or developed nearly 16.0M square feet of commercial real estate with a total capitalization in excess of \$3.0B.

#### **ABOUT BIG CYPRESS CAPITAL'S HEADWATER REAL ESTATE OPPORTUNITIES FUND I**

The Headwaters Real Estate Opportunities Fund I is Big Cypress Capital's inaugural fund aimed at developing the next generation of real estate managers and deploying investment capital through strategic joint ventures. Leaders from Big Cypress work closely with emerging managers, acting as mentors and advisors to ensure the incorporation of best-in-class practices.

